



Photograph: Deimel Oelschläger Architekten

GERMANY'S BIGGEST TIMBER CONSTRUCTION PROJECT

Berlin is enthusiastically promoting timber construction. This March, the city's senate voted unanimously in favour of making significantly greater use of wood to construct buildings within the context of the city's energy and climate protection programme. A new residential neighbourhood now taking shape in the borough of Berlin-Weissensee impressively illustrates how this can look in practice.

The idea: sustainable communities

How people live in cities is changing. Architects now face the challenge of creating residential housing that will make it as pleasant as possible to live in a large city. The Deimel Oelschlaeger architectural firm, for example, has designed a cluster of five four- and five-storey buildings with flats of different sizes with common rooms, a childcare centre, a swimming pool, a café and a kiosk. The idea is to create an environment that supports "living" in all of its senses while forging a strong sense of community.

Saving energy and resources

The use of massive timber construction techniques, timber panel exteriors with blown-in cellulose insulation and a ventilation system with heat recovery enable the buildings to comply with the KfW Efficient House 4 standard.

Key data on the project in Berlin-Weissensee

5 buildings with 4 or 5 storeys each
113 flats for about 250 people

Gross floor area: 15,600m²
Usable space: 12,400m²
Living space: 11,300m²

When built:
2018-2019

Owner representative:
UTB Berlin
Project management
www.utb-berlin.de

Architects:
Deimel Oelschläger
www.deo-berlin.de

Building contractor:
Terhalle
www.terhalle.de

Wood at its best



The construction firm of Terhalle used 4,550 m² square metres of [SWISS KRONO OSB/3 EN 300](#) panels (15 mm thick and measuring three by 1.25 metres each) to make prefabricated wall modules that considerably accelerated on-site assembly. Even the windows were pre-installed: a specialty of Terhalle.

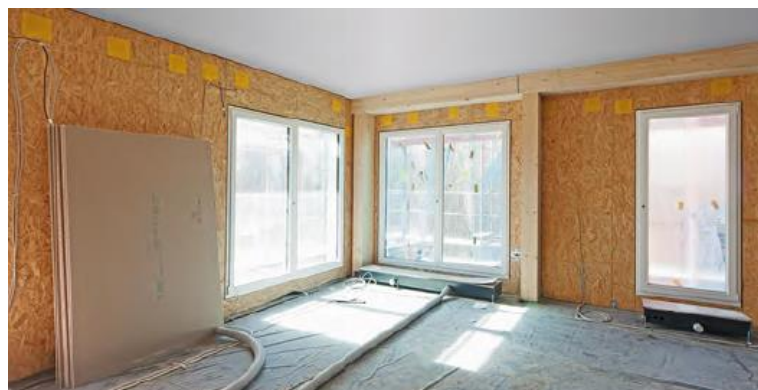


Placing the prefabricated walls made of SWISS KRONO OSB

The architects are full of praise for the economic advantages of building with wood. Standardised building types, support spacings and exterior modules also enable faster construction while reducing costs.

Uwe Jöst, Managing Director of SWISS KRONO TEX GmbH & Co. KG, says: "We have a long history of excellent cooperation with the Terhalle timber construction firm. It has its own production facilities for making everything that's needed to assemble a complete building envelope, including windows and roof modules. That's why they are so often involved in model projects."

The flats will be ready to occupy by the end of 2019.



Living and business rooms built with wood-based SWISS KRONO OSB

A new borough emerges



Picture rights: SWISS KRONO |
photographed by: Andrea Kroth

Serving you:



Stefan Gottfried

Dipl. Ing. (FH) Timber
Construction and
Interior Finishing

T +49 33962 69 - 751

F +49 33962 69 - 374

stefan.gottfried@swisskrono.com

SWISS KRONO OSB engineered wood materials boast a long list of favourable attributes. Their environmental friendliness, high strength, resistance to water vapour diffusion, airtightness and low tendency to shrink or swell make them ideal for a wide range of uses.



Harald Sauter

Master Carpenter

T +49 151 115 47616

F +49 74 3222 031 - 53

harald.sauter@swisskrono.com

Modular timber frame construction gives owners and architects enormous freedom for designing buildings and structures. Building with wood is also ecofriendly, healthy and, with prefabricated modules, extremely fast – what more could you possibly want?

Holz in Bestform

 **SWISS KRONO**



Holz in Bestform

 **SWISS KRONO**



All brochures can be downloaded in PDF format from our [website](https://www.swisskrono.com).



SWISS KRONO PLANNING APP

This digital planning tool for architects, engineers and users, available in English and German, is the successor to the successful “Timber Frame Construction Handbook”. Everyday work is facilitated by diverse filters, calculators and downloads.

Optimised for desktop computers and tablets:
timberplanner.com